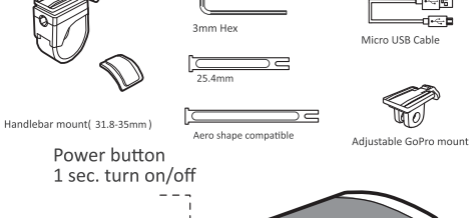
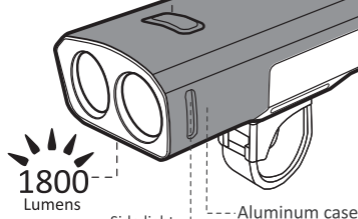


! WARNING/CAUTION

- This light emits an extremely powerful beam equivalent to auto-moble headlight so it may cause a hazardous situation depending on the beam angle used.
- Be sure to direct the light beam downward so the driver approaching does not get dazzled.
- Do not use high mode on public roads.
- Before your trip, please make sure the light is firmly mounted to the bracket, it lights up, and the light is not blocked by baggage, etc.
- Do not stare at the light when it is illuminating. Otherwise it may damage your eyesight.
- Do not place it within children's reach.
- In preparation for unexpected battery shutdown, we recommend you carry a spare light.
- This product is water-resistant under normal daily use and can be used in the rain. However, do not intentionally submerge it in water.
- If the light unit or parts become dirty with mud, etc., clean with a soft cloth which is moistened with mild soap. Never apply paint thinner, benzine or alcohol; damage will result.
- This unit is shipped with a small charge to check the light. Be sure to charge it before use, according to the instructions "HOW TO CHARGE".

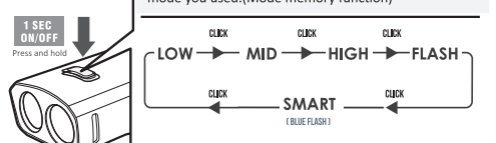


Power button
1 sec. turn on/off



SWITCHING THE LIGHTING MODE

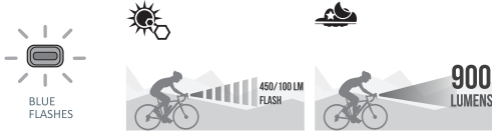
When you turn the light on, it light up in the last lighting mode you used. (Mode memory function)



LUMENS/RUNTIME

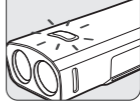
ANSI	HIGH	MID	LOW	SMART (DAY)	SMART (NIGHT)	FLASH
	1800 LUMENS	900 LUMENS	450 LUMENS	450/100 LUMENS	900 LUMENS	100 LUMENS
	01:30 h:min	03:30 h:min	07:00 h:min	40:00 h:min	03:30 h:min	65:00 h:min

SMART MODE



BATTERY INDICATOR

- Green : 100~70%
- Orange : 70~40%
- Red : 40~20%
- Red flash : 20~0%



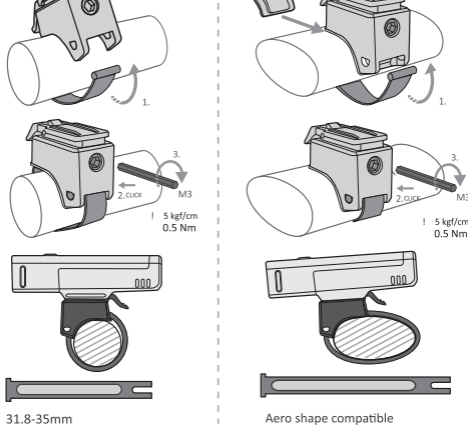
HOW TO CHARGING

Always charge the product before use.



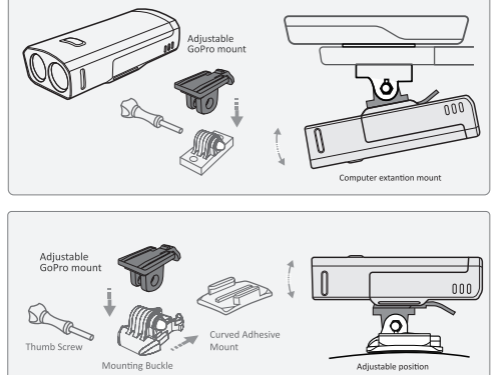
Approx. 5-19hrs(2A)

HOW TO INSTALL

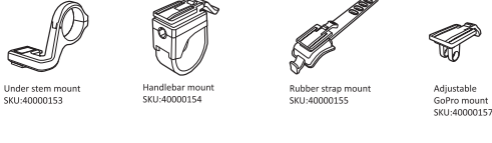


HOW TO MOUNT TO A HELMET/COMPUTER EXTENSION MOUNT

The mounting buckle and/or thumb screw, depending on the mount you are using.



SPARE/OPTIONAL PARTS



STATEMENTS OF REGULATORY COMPLIANCE

FCC Statement:
This equipment has been tested and found to comply with the limits for a Class B digital device, pursuant to part 15 of the FCC Rules. These limits are designed to provide reasonable protection against harmful interference in a residential installation. This equipment generates, uses and can radiate radio frequency energy and, if not installed and used in accordance with the instructions, may cause harmful interference to radio communications. However, there is no guarantee that interference will not occur in a particular installation. If this equipment does and on, the user is encouraged to try to correct the interference by one or more of the following measures:
(1) Reorient or relocate the receiving antenna.
(2) Increase the separation between the equipment and receiver.
(3) Connect the equipment into an outlet on a circuit different from that to which the receiver is connected.
(4) Consult the dealer or an experienced radio/TV technician for help.
Caution: Any changes or modifications to this device not explicitly approved by manufacturer could void your authority to operate this equipment.
This device complies with part 15 of the FCC Rules. Operation is subject to the following two conditions: (1) This device may not cause harmful interference, and (2) this device must accept any interference received, including interference that may cause undesired operation.

IC warning statements:
-English Warning Statement:
This device complies with Industry Canada's licence-exempt RSS standard(s). Operation is subject to the following two conditions:
(1) this device must not cause interference, and
(2) this device must accept any interference, including interference that may cause undesired operation of the device.
The digital apparatus complies with Canadian CAN ICES-3 (B)/NMB-3(B).

-French Warning Statement:
"Le présent appareil est conforme aux CNR d'Industrie Canada applicables aux appareils radio exempts de licence. L'exploitation est autorisée aux deux conditions suivantes :
(1) l'appareil ne doit pas produire de brouillage, et
(2) l'utilisateur de l'appareil doit accepter tout brouillage radioélectrique subi, même si le brouillage est susceptible d'en compromettre le fonctionnement."
Cet appareil numérique de la classe B est conforme à la norme NMB-003 du Canada.



"經型式認證合格之低功率射頻電機，非經許可，公司、商號或使用者均不得擅自變更頻率、加大功率或變更原設計之特性之功能。
低功率射頻電機之使用不得影響飛航安全及干擾合法通信；經發現有干擾現象時，應立即停用，並改善至無干擾時方得繼續使用。
前項合法通信，指依電信法規定作業之無線電通信。低功率射頻電機須忍受合法通信或工業、科學及醫療用電波輻射性電機設備之干擾。"

